



HotPort™ Outdoor Wireless Mesh Nodes



HotPort™ 3203 Outdoor Mesh Nodes

HotPort 3203 mesh nodes provide Ethernet connectivity at any outdoor location over a high-performance, self-forming wireless mesh backbone. The mesh nodes have rugged NEMA 4X/IP66-rated cast aluminum enclosures and two weatherproof 10/100 Mbps Ethernet ports for connecting outdoor network devices or other networks to the wireless mesh.

HotPort 3203 mesh nodes delivers up to 25 Mbps throughput and can operate at 2.4 GHz for maximum range and penetration, or at 5 GHz to minimize interference from other wireless devices.

HotPort High Performance Mesh Network

Firetide HotPort mesh nodes automatically connect to each other to create a HotPort high performance wireless mesh network. Designed for maximum performance, scalability and ease of use, the mesh operates seamlessly indoors and outdoors, making it ideal for campus and metropolitan area networks. Firetide's AutoMesh™ protocol provides highly efficient communication among nodes, and the network's self-forming and self-healing properties enable rapid deployment and dependable operation.

Additional features include Virtual LAN support, class of service traffic prioritization, strong encryption and access control for robust security, Dynamic Frequency Selection (DFS) to minimize radio/radar interference, and more.

Automatic Node Deployment

Upon power up, the AutoMesh protocol automatically discovers and incorporates the node into the mesh network. Multiple, redundant paths add resiliency and allow the mesh to work around disabled links or line-of-sight obstructions.

Connecting Network Devices

The two Ethernet ports can be used for access points, video surveillance cameras or other devices equipped with Ethernet interfaces. IEEE 802.3af-compliant Power over Ethernet (PoE) supports use of the node as either a powered device or power sourcing equipment.

Connecting Other Networks

Any HotPort node can also be used for internetworking. Operating as a Network Gateway Interconnect (NGI), a node can connect directly to another network, such as an enterprise LAN/WAN or the Internet. The

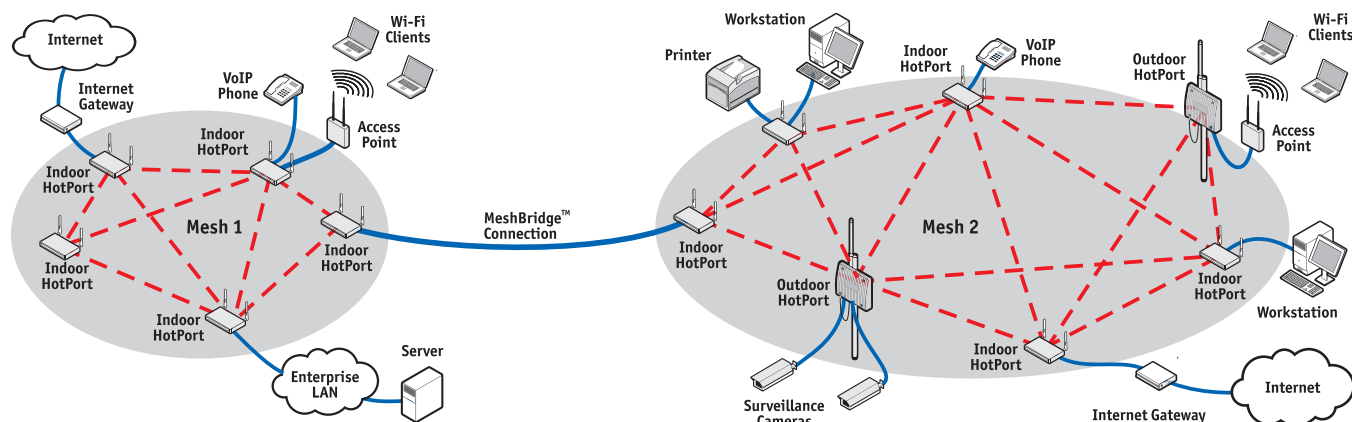
MeshBridge™ feature included with the optional HotView Pro™ software, also enables internetworking among two or more HotPort mesh networks.

Mounting, Antenna, and Power Options

Each outdoor mesh node includes a removable sun shield and a mounting bracket for installation on poles or walls. Two omni-directional antennas are provided for staging purposes. These can be replaced with a variety of high gain antennas available from authorized Firetide resellers. Power options include a weatherized external power supply and a street light power tap.

HotView™ Mesh Management Software

Each HotPort mesh node includes Firetide's HotView™ management software for basic mesh configuration, monitoring and management. The optional HotView Pro™ mesh management software provides additional control for multiple mesh networks and larger mesh environments such as enterprise, metropolitan, and campus networks. The MeshBridge™ feature allows multiple mesh networks on different radio spectrums and channels to form a single LAN or WAN environment with up to 1,000 mesh nodes.



HotPort™ Outdoor Wireless Mesh Nodes



Lower Panel Connectors



Removable sun shield

Specifications

Model

- HotPort 3203

Mesh protocol

- Firetide AutoMesh™ Protocol

Encryption

- 40 bit, 104 bit WEP keys
- 128 bit, 256 bit AES keys

Wireless interface

- Dual band 2.4 GHz and 5 GHz (channel availability subject to country-specific regulatory approvals)
 - 2.400—2.497 GHz
 - 4.900—5.000 GHz* (Japan only)
 - 5.150—5.250 GHz
 - 5.250—5.350 GHz
 - 5.470—5.725 GHz (Europe, ESTI)
 - 5.725—5.850 GHz
- TX Power: Up to 4 W EIRP depending on country of operation and antenna configuration
- Dynamic Frequency Selection (DFS)
- Transmit Power Control (TPC)
- Receive sensitivity
 - 2.4 GHz, DSSS
 - 1 Mbps: -96 dBm
 - 11 Mbps: -89 dBm
 - 2.4 GHz, OFDM
 - 6 Mbps: -93 dBm
 - 54 Mbps: -75 dBm
 - 5 GHz, OFDM
 - 6 Mbps: -92 dBm
 - 54 Mbps: -72 dBm

Antennas

- Two detachable 4dBi omni directional, vertical polarization, dual band antennas, RP-TNC (included for network staging only)

- Single detachable, high gain, spectrum-specific, omni directional and directional antennas available (order separately). See Firetide Antenna Guide.

Network ports

- Dual 10/100 Mbps Ethernet ports with weatherproof connectors
- IEEE 802.3, 802.3u compliant
- CSMA/CD 10/100 autosense
- Power over Ethernet 802.3af

Enclosure

- Cast aluminum NEMA-4X/IP66 enclosure
- Two antenna connectors (TNC reverse polarity)
- One weatherproof power connector
- Two weatherproof Ethernet connectors
- System indicator LEDs (power, mesh, fault)
- Physical security via lockable mounting bracket
- Weight: 4.85 lbs (2.2 Kg) with sun shield
- Dimensions: 9.812" x 7.812" x 2.687" (25 cm x 19.8 cm x 6.82 cm)

Power

- Input voltage: 6 VDC @ up to 2.5 A
- External power supply: 100-240 VAC, 50/60 Hz
- Power consumption:
 - Up to 14 W with no PoE load
 - Up to 35 W with PoE load
- IEEE 802.3af compliant PoE (PD and PSE)

Regulatory agency certifications

Contact your Firetide dealer for product availability and certifications for your country

Environmental specifications

- Operating temperature: -20° C to +55° C
- Storage temperature: -40° C to +80° C
- Humidity (non-condensing): 5% to 95%
- Storage humidity (non-condensing): 5% to 95%

Mesh management software

- HotView mesh management software (bundled)
- HotView Pro™ mesh management software (optional)

Warranty

- One year limited warranty (see warranty card for details)

Included accessories

- Lockable bracket for pole and wall mounting
- External power transformer (indoor rated) with 10m DC power cable
- Removable sun shield
- One weatherized Ethernet transition cable with watertight RJ-45 coupling
- Staging antennas, 1 pair

Optional accessories

- Weatherized Ethernet transition cable with watertight RJ-45 coupling
- Weatherized outdoor power supply kit
- Luminaire photocell socket power tap for use with weatherized power supply unit)
- 10 dBi omni directional antenna, 2.4 GHz
- 10 dBi omni directional antenna, 5 GHz

Additional tested and approved antennas and cable assemblies

- 9 dBi omni directional, 4.9-5.0 GHz
- 12 dBi omni directional, 5.7 to 5.8 GHz
- 10 dBi omni directional, 5.7 to 5.8 GHz
- 8.5 dBi 60° panel, 2.4 GHz
- 16 dBi 60° panel, 4.9 to 5.9 GHz
- 19 dBi 18° panel, 5.1 to 5.8 GHz
- 1.5m LMR400 cable with low loss lightning suppressor
- 5 m LMR400 cable with low loss lightning suppressor

Other Firetide Mesh Products



HotPort Outdoor Mesh Nodes



HotView™ and HotView Pro™ Mesh Management Software



HotPort 4.9 GHz Public Safety Mesh Network



Antennas and Accessories

www.firetide.com



16795 Lark Avenue, Suite 200
Los Gatos, CA 95032
Phone: +1 408-399-7771
Fax: +1 408-399-7756
Email: info@firetide.com